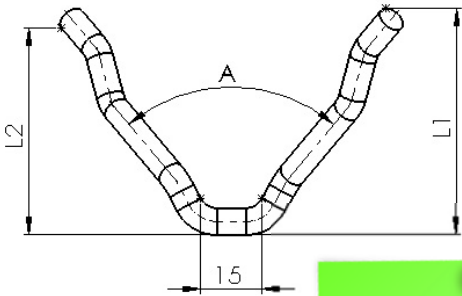
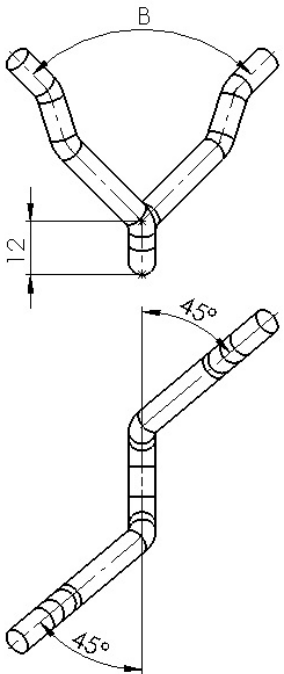


UV.6 (80/90) – 060/050 - 310

TYPE Ø ANGLE A/B LENGTH L/L1 ALLOY



*Usual angle : 60°
other angles on request*

Anchors are manufactured with a DIN EN 10278 (DIN 671) cold drawn wire, by robots using hydraulic tools. That allows minimizing bend marking and avoids micro cracks

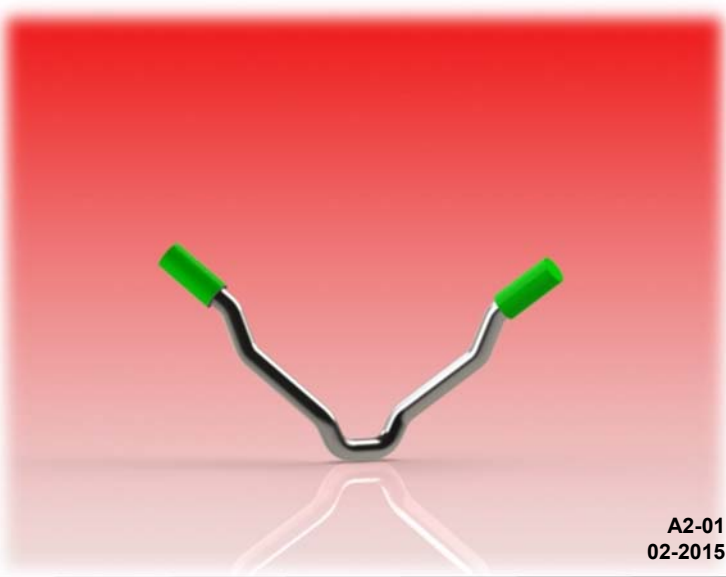
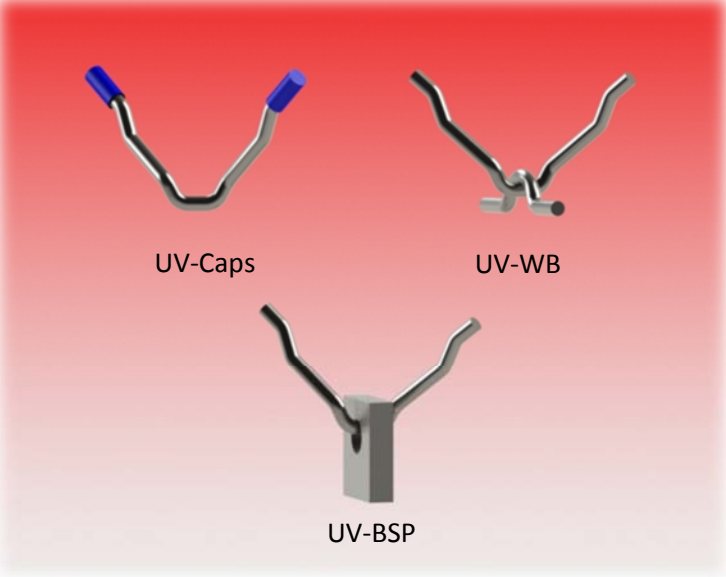
Our recommendations :

- A good solution for single layer with small thickness.
- Always cap your anchors, it will give a small space into which the thermal expansion steel alloy (higher than castable) can move without creating stress and possibly damaging in the castable.



France – phone : + 33 3 66 50 00 30
anchorscontact@gmail.com
www.anchorsforrefractory.com

Options : see details on page 6-1/6-2/6-3



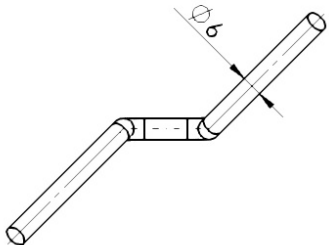
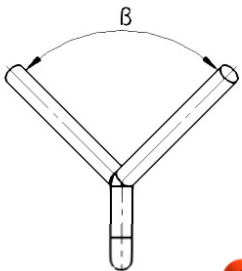
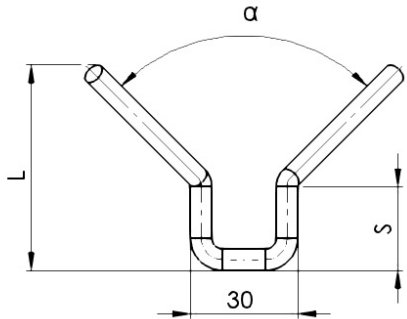
A2-01
02-2015

This drawing is the property of ANCHORS unauthorised use and / or reproduction of the drawing is prohibited. Informations mentioned are guide lines only and can be modified without previous notice .Please contact us if you want a liable specification



UBL.6 (90/90) – 060/025 - 310

TYPE Ø ANGLE A/B LENGTH L/S ALLOY



*Usual angle : 90° 90°
other angles
on request*

Anchors are manufactured with a DIN EN 10278 (DIN 671) cold drawn wire, by robots using hydraulic tools. That allows minimizing bend marking and avoids micro cracks

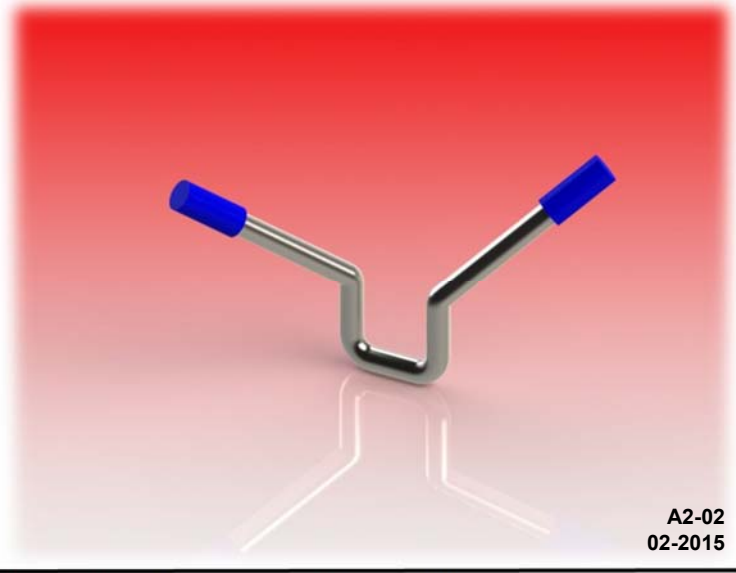
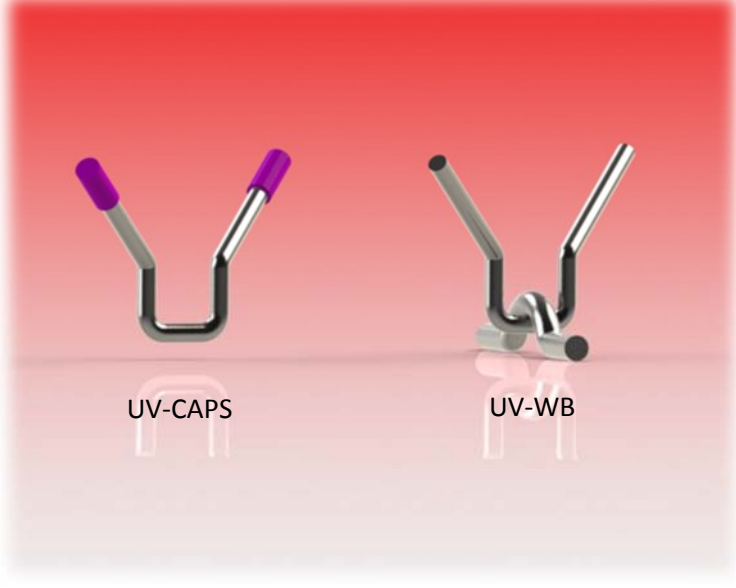
Our recommendations :

- Solution for single layer with small thickness, example : tubular wall of boiler .
- Always cap your anchors, it will give a small space into which the thermal expansion steel alloy (higher than castable) can move without creating stress and possibly damaging in the castable.



France – phone : + 33 3 66 50 00 30
anchorscontact@gmail.com
www.anchorsforrefractory.com

Options : see details on page 6-1/6-2/6-3



A2-02
02-2015

This drawing is the property of ANCHORS unauthorised use and / or reproduction of the drawing is prohibited. Informations mentioned are guide lines only and can be modified without previous notice .Please contact us if you want a liable specification